



Constant Flow Valve for Liquid

MODEL 2600-PPS SERIES

RoHS compatible

This constant flow valve has been developed for use with liquids. It can control the liquid flow rate irrespective of pressure fluctuations on the primary and secondary sides. It can be used for hot water, as well.

Features

- **Excellent constant flow valve characteristics for liquids**
The valve composed of high-precision parts permits smooth control.
- **Immune to the effects of pressure fluctuations**
The constant flow rate is maintained irrespective of pressure fluctuations on the primary and secondary (outlet) sides.
- **Control is possible from a very small flow rate in the 10 ml/min range.**
- **An air-bleeding structure has been adopted for both upper and lower diaphragm chambers.**
Air bleeding during initial flow rate setting permits high-accuracy control.



Applications

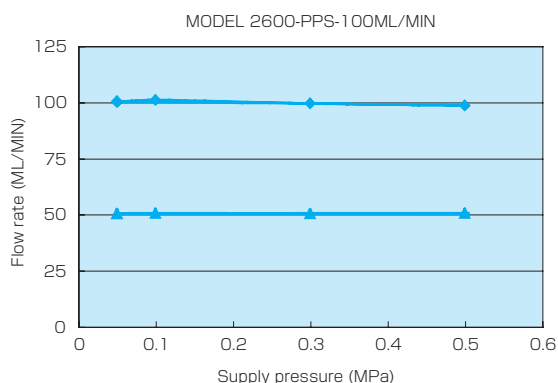
- Analyzer
- Environmental instrumentation equipment
- Liquid mixer

Standard Specifications

	MODEL 2600-PPS
Fluid	H ₂ O
Flow rating (under H ₂ O calibration conditions)	1-10 ML/MIN 10-100 ML/MIN 0.1-1 L/MIN
Control accuracy <small>Note)</small>	±3% FS
Operating differential pressure	0.1 MPa or more
Operating pressure	0.1-0.5 MPa
Proof pressure	0.7MPa
Materials of parts in contact with fluids	PPS (containing 30% glass), SUS316, fluororubber, fluororesin
Operating temperature	0-50°C
End connection	Rc1/8

Note: The accuracy of control is guaranteed when the temperature of the liquid being measured is constant, because viscosity changes according to the temperature. Please contact us for the details regarding specifications.

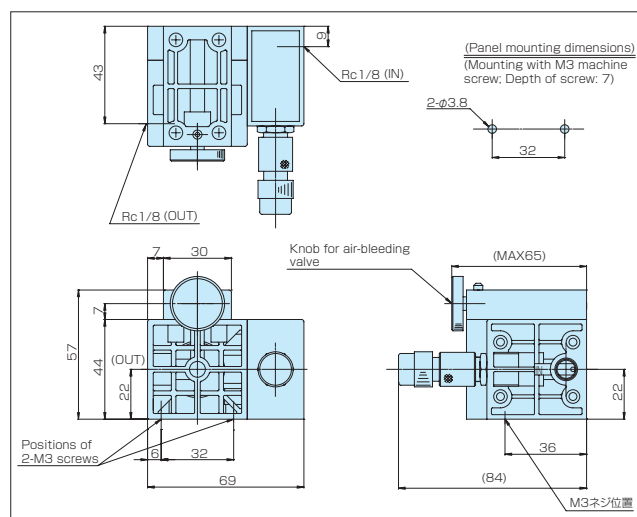
Example of Special Characteristics



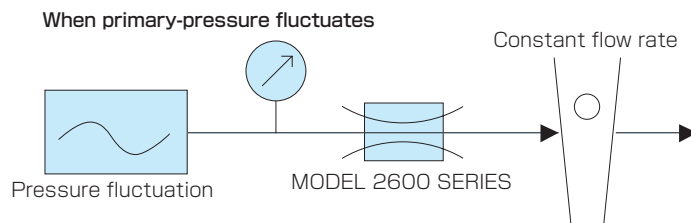
Special Specifications

- Please contact us for other ranges and other kinds of fluid.
Note: The above specifications are subject to change owing to circumstances. Install a filter, etc. on the IN side to prevent foreign substances from entering the equipment.

Dimensions



Example of Use



Ordering

